

A background network diagram consisting of a complex web of interconnected nodes and lines, rendered in a light gray color. The nodes are represented by small circles, and the lines represent connections between them. The diagram is more dense in the upper right and lower left corners, with some nodes highlighted in a darker gray.

# DJ Dexcel Networks

by CNetInfra Technologies Pvt Ltd

**Managed IT Services, Tailored for Enterprises**

## COMPANY PROFILE

---

Disclaimer: The content herein is owned by CNetInfra, and considered as CNetInfra confidential information that may not be shared with any third parties without CNetInfra's written consent.



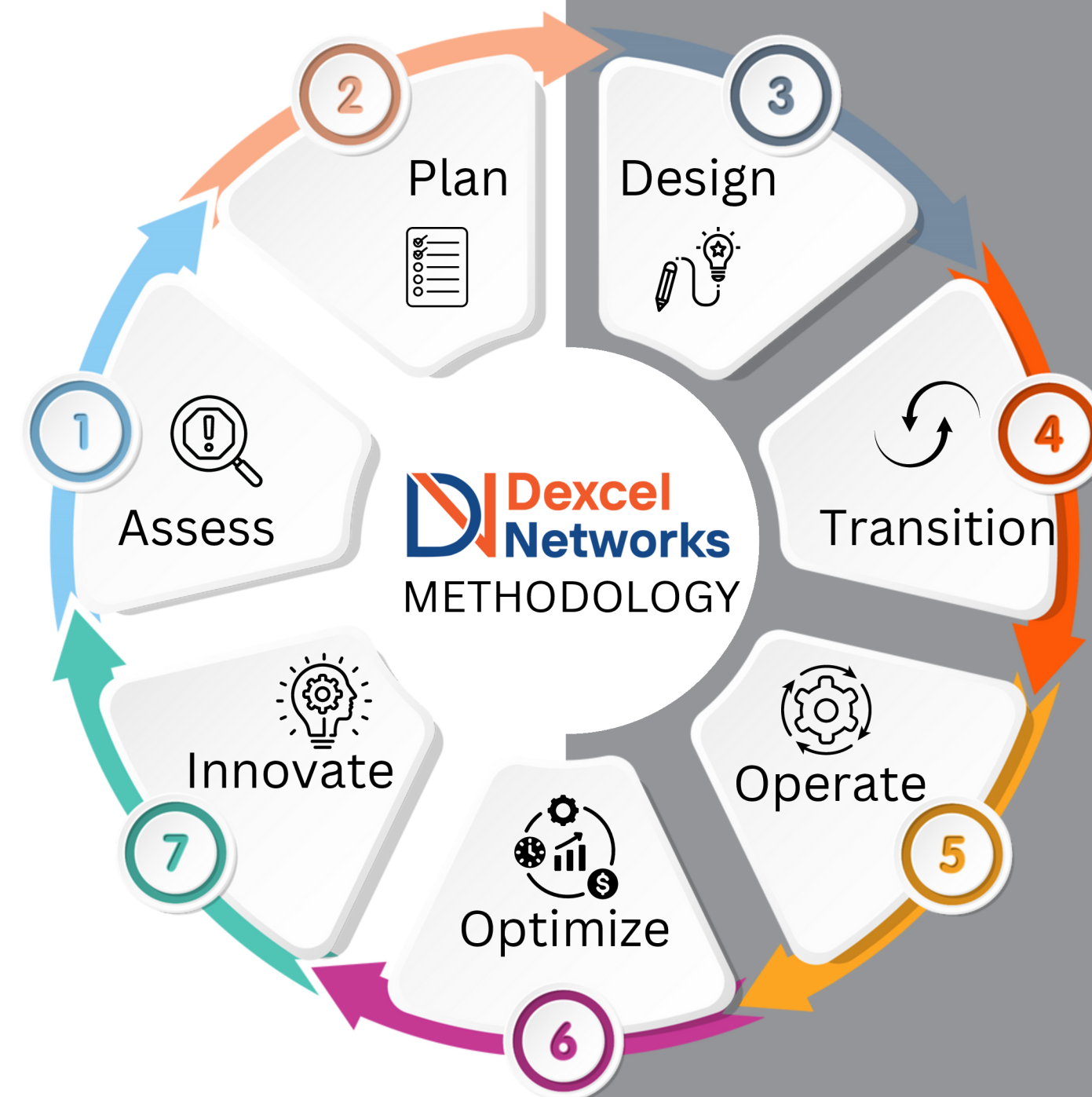
## ABOUT US

Founded in 2020 and headquartered in Pune, Dexcel Networks by CNetInfra Technologies Pvt. Ltd. is a leading provider of Professional IT Services. We aim to become a niche network industry niche player, offering unparalleled service quality and innovation.

At Dexcel Networks, a CNetInfra Technologies Pvt Ltd brand, our mission is to be a persistent niche player in Professional IT Services offering unparalleled quality and innovative services. We aim to empower our clients with cutting-edge technology, ensuring they stay ahead in a rapidly evolving digital landscape.

### Challenges We Tackle for Your Business:

- Fragmented Visibility of IT Infra
- Unlocking Productivity
- IT infra-Complexity
- Database Management
- Compliance Readiness
- Cybersecurity Risk
- Administrative Support





---

# UNMATCHED PASSION, UNCOMPROMISED SOLUTIONS



**5+**  
Years  
Experience

**50+**  
OEMs

**25**  
Global  
Clients

**99%**  
SLA  
Adherence

**24x7**  
Managed  
SOC & NOC

**25**  
Subject Matter  
Expert

**90**  
Client  
Retention





---

## OUR ACCREDITATIONS:





---

**Uniquely tailored services for every project  
and company**

## **Vision**

Prioritizing the needs and satisfaction of our clients in every service we provide.

## **Purpose**

To be the most persistent, innovative, and hands-on IT services provider for our stakeholders globally.



# SERVICES PORTFOLIO

Our expertise in IT and Cloud Infrastructure Management ensures that your business operates seamlessly, securely, and efficiently.

More Information 

# SERVICES SOLUTION STACK



## Managed Infrastructure Services

- Pulse: Infrastructure Monitoring as a Service
- DB Monitoring, Management and Professional Services
- Microsoft Windows Servers and Application Services
- Microsoft Office 365 Services
- Microsoft Azure Cloud Services



## Managed Security Services

- VAPT: Pre and Post Assessments for Web/ Network/ Mobile
- GAP Assessments
- SEC360: SOC as a Service
- Google Chronicle Implementation Services



## Enterprise Service Management

- IT Service Management (ITSM)
- IT Operations Management (ITOM)
- IT Asset Management (ITAM)
- Network Traffic Analyzer (NTA)
- Network Configuration Manager (NCM)
- DN Edge



## Professional Services

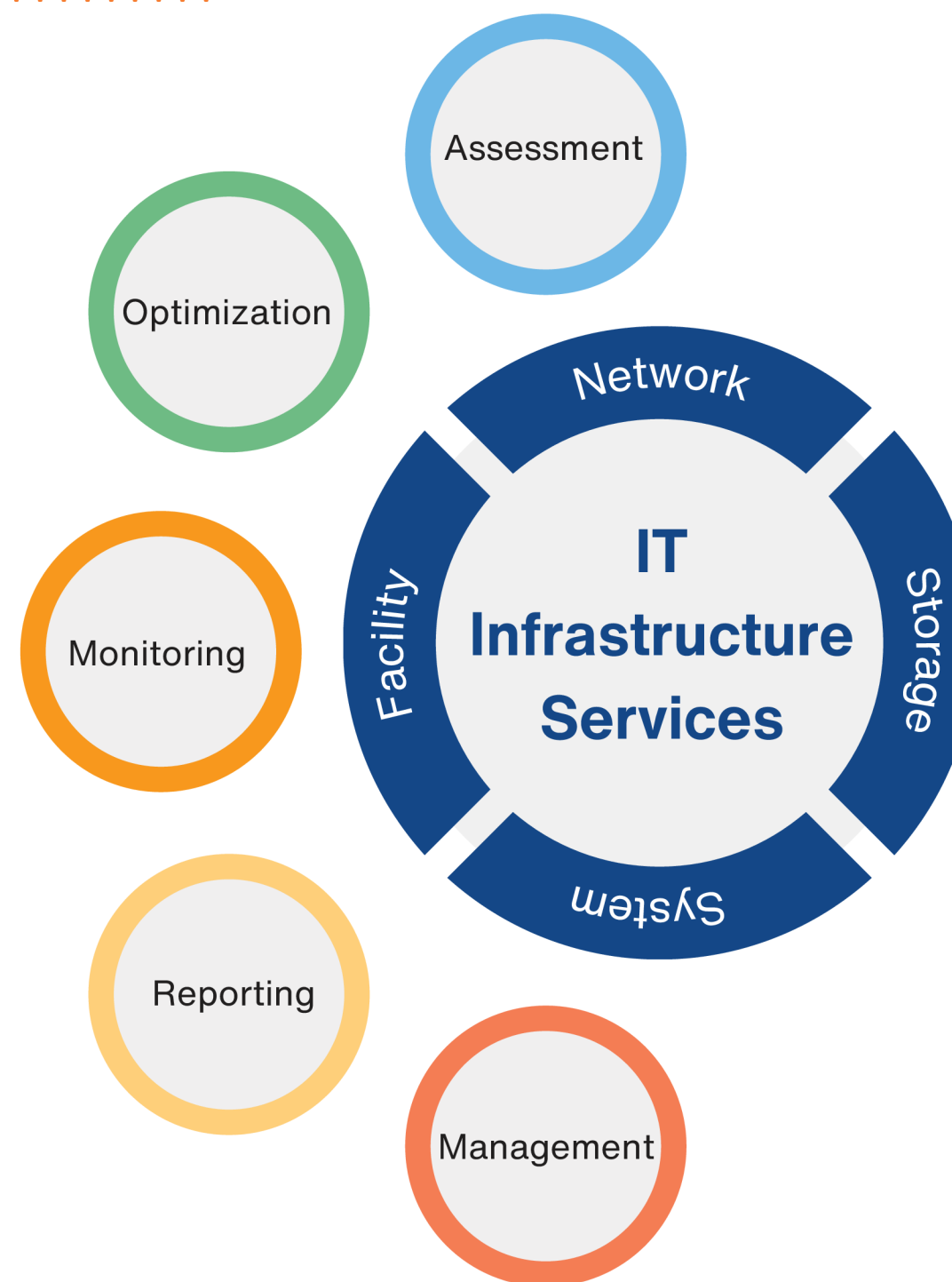
- Implementation
- Migration
- Sustainance
- Management



# Managed Infrastructure Services

Our Managed Infrastructure Services deliver comprehensive management and monitoring for your on-premises and cloud IT infrastructure, enhancing your operational agility, reducing risks, and optimizing your technology investments.

- Enterprise Managed service
- Managed Cloud Infrastructure
- Professional services
- PULSE Monitoring services
- Data Base services
- DR and Backup management





# DN Monitoring



**Networks**



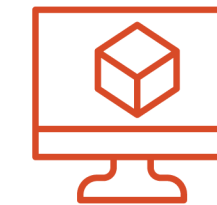
**Servers and  
Storage**



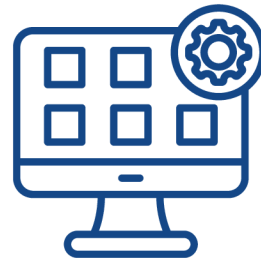
**Clouds**



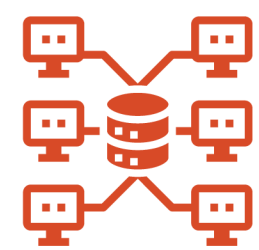
**Telephony**



**Virtual  
Machines**



**Applications**



**Databases**



**Web Monitoring**



**Security**



**Services**

# DN Database Management Services



**Monitoring and  
Troubleshooting**



**Database Performance  
and Optimization**



**Database Administration  
and Support**



**Database Recovery and  
High Availability**



**Database Backup and  
Recovery**



**Security**



# DN Managed Security Services

We address and manage security risks at both global and local levels with our complete suite of consulting, audit, and assessment services. Our offerings include vulnerability assessments, firewall protection, breach assessments, risk management, high-impact red teaming, and actionable insights from our threat intelligence platform.

- Incident response
- SIEM management
- EDR / XDR
- Data / Network Security
- Forensic Services
- Threat Hunting
- VA & PT
- Compliance Audits
- Red Teaming
- IOT / OT security
- SEC360 - SOC as a service
- ASPL Edge



Chronicle

securonix



splunk



---

# Enterprise Service Management

We seamlessly integrate enterprise service and asset management into one unified platform, revolutionizing IT efficiency, speed, and delivery. Leveraging insights and automation, our team anticipates issues, minimizes user disruptions, and accelerates resolutions. We empower you to manage your IT assets effectively, automating the entire lifecycle of software, hardware, and cloud assets to optimize costs and mitigate risks.

- IT Service Management (ITSM)
- IT Operations Management (ITOM)
- IT Asset Management (ITAM)
- Network Traffic Analyzer (NTA)
- Network Configuration Manager (NCM)
- ASPL Edge – Sustenance Services





## DN EDGE – Administrative Services

### KEY FEATURES:

- Comprehensive administrative and maintenance services for your products and platforms.
- On-demand access to trained administrative experts, ensuring effective use of all features, timely updates, and upgrades, and optimized management of administrative tasks.
- Guaranteed SLAs, rapid deployment, and flexible support options to meet your needs.
- Support services that extend beyond standard break/fix contracts.
- No need to hire and retain specialized resources, reducing attrition risks and high staffing costs.
- Use Cases: API integration, dashboard customization, version upgrades, workflow creation, feature optimization, custom report generation, and more.





---

# CONTACT US



+ 91 7756099970  
+ 20-67023201



[www.dexcelnetworks.com](http://www.dexcelnetworks.com)



[Info@dexcelnetworks.com](mailto:Info@dexcelnetworks.com)



Dexcel Networks  
CNetInfra Technologies Pvt Ltd  
Office nos 302 - Box Street SoHo - PANCHSHIL  
TOWERS, Upper Kharadi Main Rd, Kharadi, Pune,  
Maharashtra 412207







**DJ Dexcel  
Networks**  
by CNetInfra Technologies Pvt Ltd

---

We ensure that your business operates seamlessly, securely, and efficiently.

Lorem ipsum dolor sit amet, consectetur adipiscing elit, sed do eiusmod tempor incididunt ut labore et dolore magna aliqua. Ut enim ad minim veniam, quis nostrud